



NATICK™

Seating

AIS

NATICK KEEPS TEAMS ON TASK
COMFORTABLY WITH STYLE AND
COUNTLESS FEATURES.



One chair.
Endless options.

Make Natick your own. Begin with a black or grey frame, explore a variety of base and arm configurations, choice of task or stool, headrest, then go from there. Seat and chair backs are offered with many user-friendly options and come with hundreds of material choices—including graded-in fabrics and solid or graduated stripe mesh selections. Natick easily supports many custom materials, too.

Explore Natick seating and appreciate the many ways it can meet the needs of users today.



Designed for focused tasks or working on the go, Natick offers the perfect amount of sophistication and comfort. Natick makes a style statement while supporting users throughout the day. It's easy to fine-tune this highly adaptable chair to meet individual needs.

From seat height and depth adjustments to a body conforming back and 4-D arms, Natick offers users the essential features for comfort. Even more support is delivered with the choice of a center tension or an automatic weight-activated synchro-tilt mechanism that supports and moves with each person's natural pivot points and seated body motion.

Need a chair for the task at hand? Look no further than Natick.

Spanning across applications from open plan to private office:



Open Plan / Benching



Manager Offices



Stool / Lab



Executive C Suite

Due to print variations, colors and materials shown may not be fully accurate. Please see your AIS representative if you would like a sample.

BOLD, STYLISH, ADAPTABLE.



Center tension synchro-tilt mechanism with upright back-lock

Because all users are created differently, Natick is designed to adjust to a variety of body types. Users can easily set the seat back tension for comfort.



Arm height, width, depth, and rotational adjustment (available armless, with 1-D, 3-D, or 4-D arms)

Natick can be easily tuned to each user's needs and preferences (shown with 4-D arm).



Seat height and depth adjustment accommodates numerous body dimensions

Natick's sliding seat pan offers 3" of adjustment.



Optional headrest

Ergonomically designed for comfort, the optional headrest supports your head and neck in a variety of postures. Height and depth adjustable.



Body conforming or optional adjustable lumbar support

From the lower back up, Natick supports the user for a full day's work.



Weight-balanced synchro-tilt mechanism with multi-position back-lock

Choose the optimal back position and lock into place. Control is located on the left underside of the seat. This weight-balanced mechanism automatically adjusts seat back tension, so users don't have to.



Molded seat cushion and lower back design ensure comfort and prevent fatigue

Shaped to conform to the individual, Natick's chair back naturally provides exceptional lumbar/lower, middle, and upper back support. Plus, a generous molded foam seat cushion offers years of comfort.

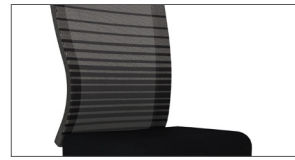
NATICK

Choices you'll appreciate. Seat height, seat depth, body conforming or optional lumbar support, arm adjustability, along with a multiple position back-lock allow you to fine-tune Natick to your size, shape, preference, and task at hand. Express three-day shipping is available for select black and grey models; standard shipping for optional configurations.

Have something unique in mind? Don't hesitate to ask about all of our Natick options.

Features & Options

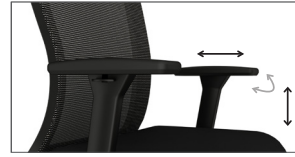
- Grey or black base, frame, and 1-D, 3-D, or 4-D arms
- Optional polished aluminum base
- Weight-activated synchro-tilt mechanism (automatic tension) with four-position back-lock
- Center tension adjustable synchro-tilt mechanism with upright back-lock
- Armless, 1-D, 3-D, and 4-D arms in black and grey to match the frame color. The 4-D arm with polished element, adjusts in height, from side to side, front to back, and rotates. Once adjusted for proper fit the 4-D arm-cap will lock into place.
- 3" seat depth adjustment
- Optional headrest articulates and adjusts to support your head and neck throughout various working postures. Height and depth adjustable.
- Pneumatic seat height adjustment
- Optional adjustable lumbar support
- Task and stool version
- Solid or graduated stripe mesh in a variety of colors, or fully upholstered back
- BIFMA level® certified
- CAL 117 or optional CAL 133 fire code compliance
- Certain pre-configured all-black or all-grey models are in the Express Program (three-day ship)



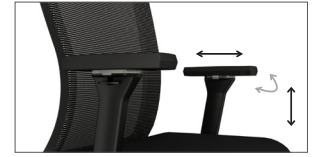
Armless



1-D Arm



3-D Arm

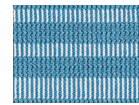


4-D Arm

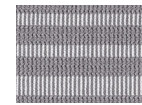
Mesh colors include:



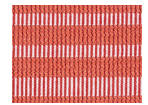
Graduated Stripe-Black



Graduated Stripe-Blue



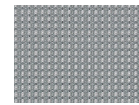
Graduated Stripe-Grey



Graduated Stripe-Orange



Solid-Black



Solid-Grey

Due to print variations, colors and materials shown may not be fully accurate. Please see your AIS representative for samples.

Task Seating - 4900/4900C (Configurable) 4930/4930C (Configurable)

Weight	35 lbs
Width	26"
Depth	24"
Height	40 - 45"
Seat Width	20"
Seat Depth	16 - 19"
Seat Height/Standard	16 - 20"
Seat Height/High	18 - 23"
Arm Height	7.5 - 10"
Lumbar Apex	8 - 10"

Stool - 4923C (Black Configurable)

Weight	41 lbs
Width	26"
Depth	24"
Height	43.5 - 51.5"
Seat Width	20"
Seat Depth	16 - 17.6"
Seat Height/Standard	21 - 28"
Seat Height/High	25 - 35"
Arm Height	7.5 - 10"
Lumbar Apex	8 - 10"



For additional images: <http://imagelibrary.ais-inc.com/>

800.434.7400 | 978.562.7500 | www.ais-inc.com | info@ais-inc.com | 08/2020 | NATKBR



AIS